

Mt. Airy Net Annual Report 2021



Crisis Support and Food Pantry

A cooperative network of businesses, churches, organizations and caring individuals.

Our mission is to provide support and services for those in need in our community.

Crisis Office Hours:

Tuesday - Thursday
10:00am - 2:00pm

Phone:

301-829-0472

Crisis Office Email:

Director@mtairynet.org

Donations/Volunteers Email:

mtairynetpantry@gmail.com

Website:

www.mtairynet.org

Facebook:

Mount Airy Net (Mt. Airy Net)

Mailing Address:

PO Box 569
Mt Airy, MD 21771

Dear Friends, Neighbors, and Donors,

Well we made it through 2020 in one piece but things were still difficult as we rang in 2021. Many people were still without jobs or a reliable source of income, certain food items and supplies were very difficult to find, our mail was taking weeks to reach its destination, and the Covid-19 vaccination was just starting to be available in our area. However, our donors and community groups continued to provide food, toiletries and financial support for Mt Airy Net. We were grateful for this abundance, but we were running out of space and our daily operations were becoming quite difficult.

A wonderful opportunity knocked on our door and after several meetings and lots of demolition/construction in 4 short months, we were able to relocate our entire pantry and office to Mt Airy Baptist Church on North Main Street. We moved into our new location last April and had the official ribbon cutting ceremony in September. Our entire board of directors, Pastor Josh Vogt, some of our donors, and several members of the county and town councils were able to join us for the festivities!



As I finish up my 4th year serving as president of the board, I

am still amazed and impressed by the Mt Airy Community. The number of people and organizations that regularly volunteer their time and resources is wonderful. We are only able to assist the number of families that we do because of you!

Thank you, thank you, thank you!

Laura Hagenbuch

President, Board of Directors



Sue Veres, Net Director

Eric Bouchat, County Commissioner

Laura Hagenbuch, Board President

MOVING DAY!!!



In April 2021 we packed up the old pantry into hundreds of boxes, bags and crates and into dozens of trucks. On a beautiful Saturday morning and with the help from Net families, community groups, and local volunteers, we transported everything to the end of Main Street and into our new home at Mt Airy Baptist Church. In less than 3 hours, we had all of the food and toiletries placed on shelves and in the freezers/refrigerators. We have so much space now and are extremely grateful!



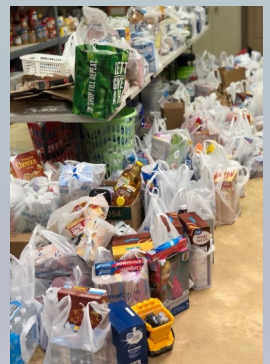
The Mt Airy community provided Thanksgiving dinner for 133 families and provided Christmas gifts and/or dinner for 151 families last year!



How Your Donations Helped!



- ◆ 1040 carts of groceries were distributed
- ◆ 1096 gift cards for fresh items were distributed
- ◆ 11 utility turnoffs were prevented
- ◆ 7 families received assistance with housing costs
- ◆ 6 families received assistance with medical expenses
- ◆ 43 new clients came into the Net in 2021
- ◆ 200+ coats, socks and gloves were distributed in our 2nd Annual Coat Drive





We couldn't do it without the help and generosity of the Mt Airy Community!



2021 Financial Overview

This report summarizes Mt. Airy Net, Inc.'s 2021 income and expenses in support of our mission to assist those who are in short term, emergency need.

Mt. Airy Net, Inc. is recognized by the IRS for tax deductible donations (Tax ID 52-1819054) and is registered and in compliance as a 501 (c)(3) charitable organization with the state of Maryland (ID 23702).

This data is submitted annually to the Maryland Secretary of State, Charities and Legal Services Division as required to maintain 501(c)(3) status. This data is also submitted to the IRS on form 990, *Return of Organization Exempt from Income Tax*. This form is available for public inspection at the Net office and at mtairynet.org.

Respectfully submitted,

Gail Costello
Treasurer, Mt. Airy Net Inc.

2021 FINANCIAL SUMMARY	
INCOME	\$
Church Donations	42,740
Individual/Other Donations	132,165
Organization/Business Donations	28,424
Interest Income	276
TOTAL INCOME	203,605
EXPENSES	
Food (Vouchers & Pantry needs)	24,723
Utilities (Electric, Water, Heating Oil)	4,290
Rent assistance	10,706
Miscellaneous (Medical, Repairs, School Supplies, etc.)	2,150
Total Financial Assistance:	41,869
Payroll	26,029
Telephone, Net office	1,862
Insurance and Fees	3,412
Marketing, Supplies., Accounting & Misc	8,155
Total Overhead Expenses	39,458
TOTAL EXPENSES	81,327
% Overhead Costs (Employee costs are not included)	6.6%

Yes, I want to make a difference in our community today!

Please make your check payable to Mt. Airy Net and mail it with this coupon to,

Mt. Airy Net

PO Box 569

Mt. Airy, MD 21771

\$500 \$250 \$100 \$75 \$50 \$25 Other \$ _____

I am interested in making a monthly contribution of \$ _____

Name:

Address:

City: _____ State: _____ Zip: _____

Email: _____

Give your gift immediately! Visit us on-line at www.mtairy.net

PLEASE
PLACE
STAMP
HERE



Mt Airy Net
PO Box 569
1402 N Main St
Mt Airy, MD 21771